



Deutsche Investitions- und Entwicklungsgesellschaft (DEG)

DEG, a member of the KfW Bankengruppe (KfW banking group), finances investments of private companies in developing and transition countries. As one of Europe's largest development finance institutions, it promotes private business structures to contribute to sustainable economic growth and improved living conditions.



Geocycle, Holcim (Lanka) Limited

Holcim (Lanka) Limited is part of the global Holcim group. The company currently operates one fully integrated cement plant located at Puttalam and a grinding plant located in Galle with the focus of aligning with sustainable practices through economic, social and environmental performance. In 2003, the waste management arm of Holcim, the Geocycle was founded with the aim of providing the local industries with their global experiences, state of the art technological expertise and superior customer service in waste management solutions. Conformance to the management best practices ensures stability and endurance giving peace of mind to the customers and a greener future for Sri Lanka.



Asia Society for Social Improvement and Sustainable Transformation (ASSIST)

ASSIST is a non-profit capacity building organisation that works on issues ranging from climate change, energy efficiency, and renewable energies to human rights, democracy and good governance. ASSIST promotes the philosophy of Partner to Progress (P2P) and continues to communicate, collaborate and capacitate with key stakeholders from industrial & social sectors to achieve real and sustainable progress.

Katunayake Seeduwa Urban Council, Sri Lanka

Katunayake Seeduwa city is the key city located in Gampaha District which is governed by Katunayake-Seeduwa Urban Council. The area is both economically as well as environmentally important to the country as the Katunayake Bandaranayake International Airport, the key industrial zones, the proposed high-way etc. are located in the same area.



Contact Information

DEG
Kärmergasse 22
50676 Köln Germany
PO Box 10 09 61
50449 Köln
T: +49 221 4986-0
F: +49 221 4986-1290
www.deginvest.de

**Holcim (Lanka) Ltd
Geocycle**
413, R.A. De Mel
Mawatha
Colombo 3, Sri Lanka
T: +94 11 7800 669
F: +94 11 2555 432
www.geocycle.lk

ASSIST
No-9, Desika Road, Mylapore,
Chennai 600004
T: (+91) 44-455 48438 /
420 72357
F: (+91) 44-420 72357
www.assistasia.org

**Katunayake Seeduwa Urban
Council**
Urban Council Office
Seeduwa,
Sri Lanka
T: +94 11 2253 575
F: +94 11 4830 313

Disclaimer:

"This document has been produced with the financial assistance of DEG. The contents of this document are the sole responsibility of Holcim (Lanka) Limited and ASSIST and can under no circumstances be regarded as reflecting the position of DEG."



WASTE NOT THE WASTE



CO-FINANCED BY

IMPLEMENTING PARTNERS

IN ASSOCIATION WITH



Katunayake Seeduwa Urban Council



Conceptualised by
PROMISE Project Team

Designed & Developed by
Asia Society for Social Improvement &
Sustainable Transformation (ASSIST)

Contact
Holcim (Lanka) Ltd
Geocycle
413, R.A. De Mel Mawatha, Colombo,
Sri Lanka
Tel No.: +94 11 7800 669
Fax : +94 11 2555 432
Website: www.geocycle.lk

ASSIST
No-9, Desika Road, Mylapore
Chennai - 600 004
India
Tel No.: (+91) 44 4554 8438
Website: www.assistasia.org

Let us **PROMISE**

to save our home- Mother Earth





Message to the Readers

Our planet Earth provides us with all we need. The resources from the Earth's lap are used to make different products for human need and greed.

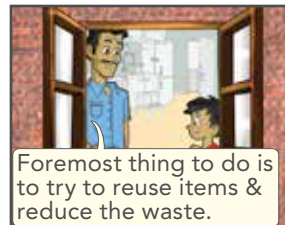
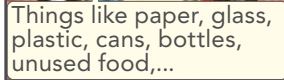
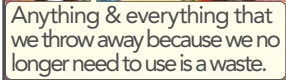
Our utmost duty is to use the resources wisely & save for the future generations.

Each individual can participate in his or her own way by taking little care to make a huge difference.

Yes!each of us can make a huge difference to restore the glory of the Earth.



What is
Waste?





How can we differentiate between bio-degradable & non-biodegradable waste?



That is easy to remember son. All kitchen waste like unused food, fruit and...

...vegetable waste and other waste like paper is bio degradable...



where as wastes like plastics, bottles, cans, electronic waste etc are non bio-degradable.

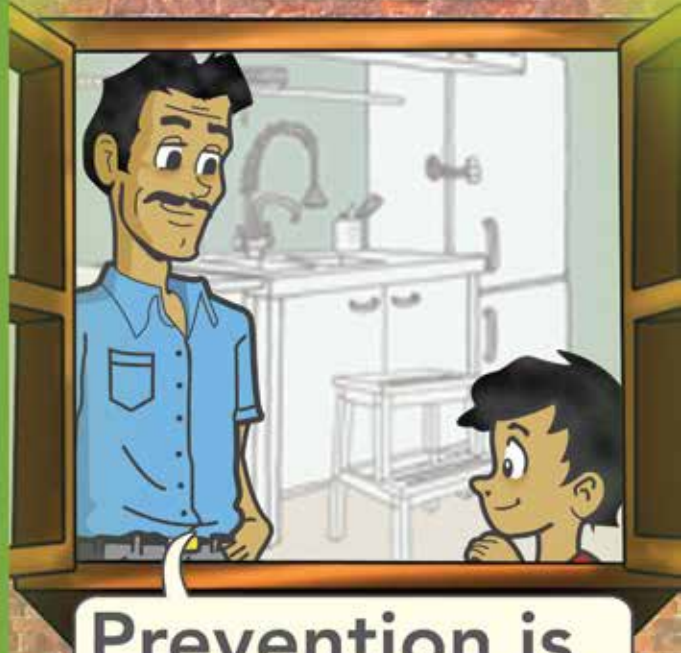


Bio-degradable waste can be broken down by micro and other organisms to become a part of the soil or can be used for composting to produce heat or electricity. Important thing to do is to discard such wastes separately from non bio degradable wastes.



Non bio -degradable waste cannot be broken down & therefore pose serious threat if accumulated. Wastes like glass, metals, plastics, harmful chemicals etc. cannot be decomposed. It is advisable to reuse and recycle such wastes to reduce their disposal in the environment.





**Prevention is
Better than Cure**



"We are all a product of our environment. What we put in the environment is what is given back to us."

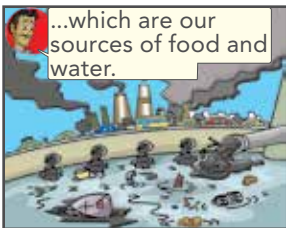


Does it mean that our environment is polluted because of us?

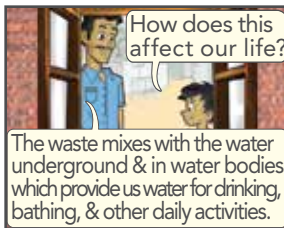
Very much, son. When we throw the waste out,...



...it gets clogged on the land & in water bodies...

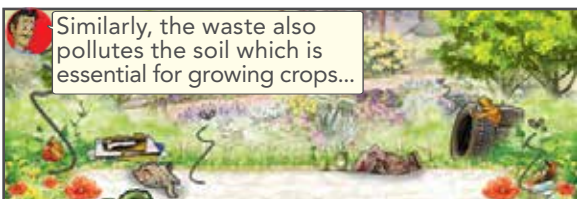


...which are our sources of food and water.



How does this affect our life?

The waste mixes with the water underground & in water bodies which provide us water for drinking, bathing, & other daily activities.



Similarly, the waste also pollutes the soil which is essential for growing crops...



...and also harms the marine animals & planktons.



& we consume seafood & vegetables & other crops growing in polluted areas.



So consumption of these products is harmful for us.

You got it right.



The waste that we throw out & the pollution we cause comes back to us directly or indirectly causing harmful health ailments.



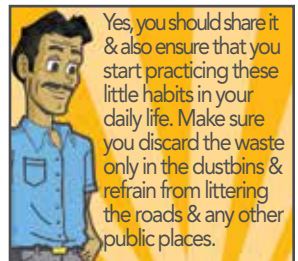
Therefore, it is better for us to be careful and responsible, avoid creation...



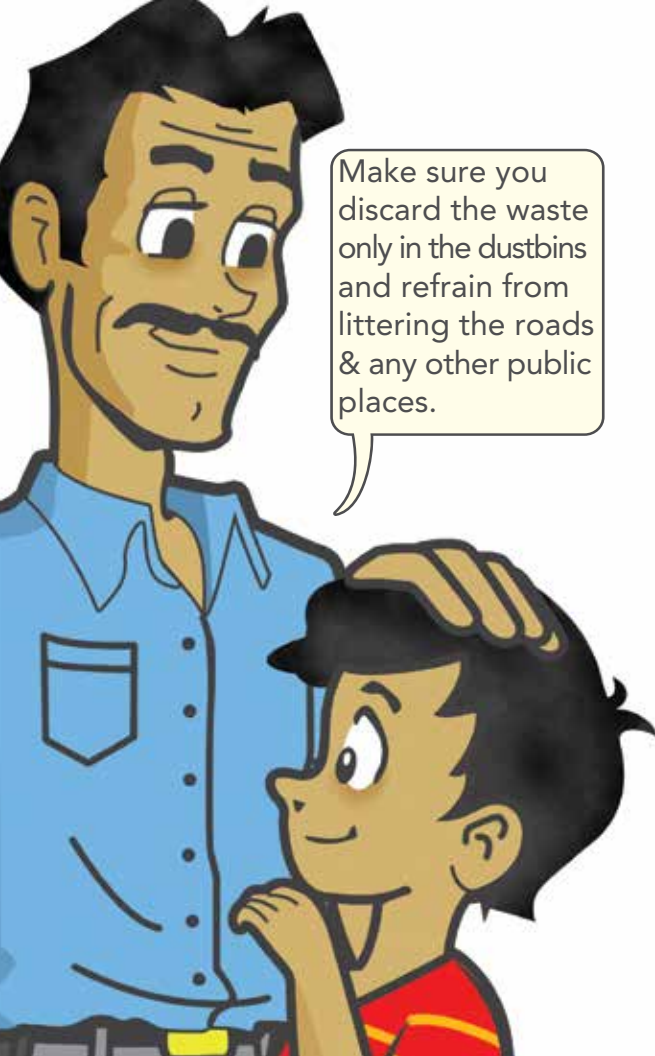
of any such conditions which can cause harm to our health and the environment later.



Interesting lesson dad. I shall share this with all my friends at school and in the neighborhood.



Yes, you should share it & also ensure that you start practicing these little habits in your daily life. Make sure you discard the waste only in the dustbins & refrain from littering the roads & any other public places.

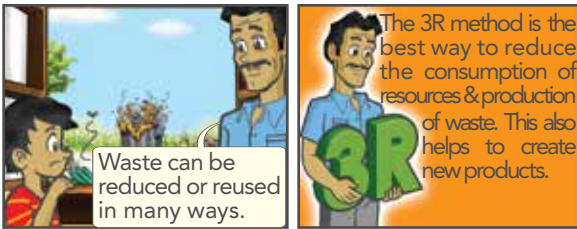


Make sure you discard the waste only in the dustbins and refrain from littering the roads & any other public places.





**Magic with
Waste**



It is always good to buy only what we need and buy sensibly. Every product when being bought should be checked for its shelf life to avoid wastage of the product due to expiration of its shelf life.





When a product has served its actual purpose, think of other ways to reuse the product. This will reduce the amount of wastage and also help in reduction of purchase of new products.



When a product has served its purpose and cannot be reused, then the product can be recycled or disposed responsibly to be recycled after collection and segregation at the waste collection site.



You can
Contribute too





All our food waste like vegetable and fruit peels, leftover food, unused food, spoiled food and all other food scraps can be used to make the compost. The food waste mixes with the soil and becomes the compost which can be used for growing crops and flowers.



Every individual can contribute towards waste reduction and environmental conservation.

Reduce your throw away trash!



PAPER AND CARBON WASTE

Reuse & recycle of paper and cardboard can help is reduction of cutting down of trees which are the source for paper production. Paper & cardboard in the form of newspapers, magazines, boxes, packaging materials, writing materials is commonly used in households, institutions, industries etc.

Paper can be reused for packing, making book covers, cards etc. Paper can also be used in the compost to make soil. Buying books made of recycled paper will help reduce cutting down of tress for production of fresh paper.





GLASS WASTE

Before disposing any kind of waste, check if it can be reused or recycled.

Glass waste coming from jars, bottles, vessels, windows etc is not bio degradable & therefore consumes a lot of space in the dumping grounds.

Glass jars and bottles can be easily reused to store food items. Remaining items which cannot be reused can be handed over to glass recyclers.





Different products can be treated and reused differently based on their characteristics.



Plastic consumption is generally more & burning of plastic causes severe air pollution adding to environmental degradation. Huge quantities of plastic are thrown in the sea affecting the marine flora and fauna adversely.

Best way to get rid of plastics is by reducing the plastic usage.

Plastic is difficult to recycle & the process of recycling plastic is very expensive. Best way to deal with this waste is by reducing its usage and reusing as much as possible.





Points to Remember!

So dear friends,
Remember the follow-



Let's not make Garbage a mixed bag by disposing all the waste together.



Some waste can be a potential waste by-product with a good re sale value.



And remember... to buy recycled products! This will reduce depletion of resources and encourage recycling practices.



Applying the 3R method will help to reduce the consumption of raw materials & disposal of waste in the open landfills.



Waste when handled & treated properly can become wealth.

